

Binocular Indirect Ophthalmoscope

IO- α LED CAMERA



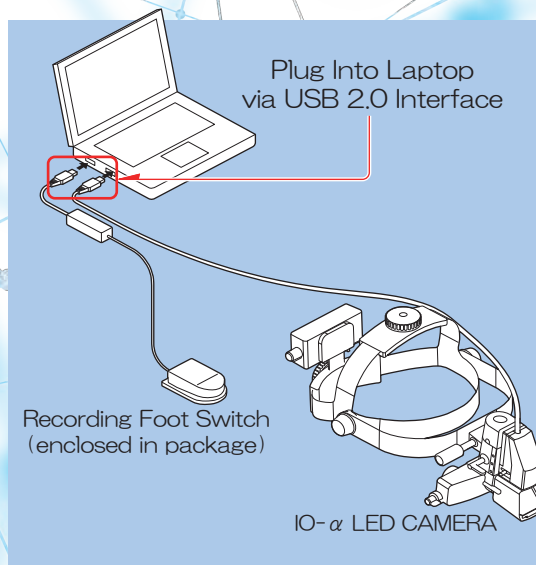
FullHD

1920(H)
1080(V)
2megapixel

Digital Imaging Applications

- For recording surgery or diagnosis to share with doctors or students
- For explaining diagnosis to patients with higher resolved still shots
- For sharing examiner view at congress presentations or education

IO- α LED CAMERA System Configuration



Technical Specifications (preliminary)

BIO

LED	Warm White 3200K
Output	DC 3.2V 0.7W
Filters	UV, Red Free, Cobalt Blue
Illumination Field	$\phi 19 \phi 39 \phi 60$ (@500mm frontward)
Illuminance	50 – 600lx (@500mm frontward with UV filter)
Lighting (Continuous Use)	5 hours (@600lx)
Variable Pupil Distance	Range 54 – 74mm

Camera

Format	CMOS (1/2.9) – Integrated
Resolution	Full HD 1,920(H) x 1,080(V) 2 Mega Pixel
View	Angle 92 x 52mm (@500mm frontward)
Focus	Range 200 – 600mm (Manual Focus)
Interface	USB 2.0 Mini-B
Output	MJPEG / 30fps WMV AVI

Capture Software

Software	Dedicated "Capture Software for NEITZ"
Operations	Windows 7 / 8 / 10 (32bit / 64bit)

Battery Pack

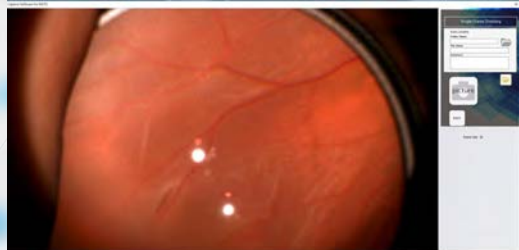
Cell	Nickel-Metal Hydride
Charging	Approx. 150 – 180min (full)
Life	Approx. 1,500cycles
Power	AC100 – 240V 50-60Hz 15VA

Physical

BIO	164 x 116.5 x 102.5mm (w/o Headband) 730g
Battery Pack	90 x 45 x 30mm 130g

Environment

Temperature	+10 – +35 Centigrade
Relative Humidity (RH)	30 – 90%



Neitz Instruments Co., Ltd.

4F Ichibancho Court, 15-21, Ichibancho,
Chiyoda-ku, Tokyo 102-0082, JAPAN
Tel: (+81) 3-3237-0552
Fax: (+81) 3-3237-0554
URL: <https://www.neitz.co.jp/en/>



Distributor: